

Leica CRS240

Visual Detection Camera

Datasheet



The Leica CRS240 is an Automotive Ethernet IP camera that can be mounted on any type of vehicle in the heavy construction industry.

It is an integral part of the Leica Xsight360 safety awareness solution, which uses AI models for human form, vehicle and construction cone detection to prevent accidents and collisions on site.

Up to six cameras can be installed on a vehicle, offering 360 degrees of visibility and eliminating blind spots.

Description

Horizontal lens angle	120°
Vertical lens angle	75°
Data signal	100Mb/s 100BASE-T1 (BroadR-Reach)
Sensor element	High resolution 1/2.54" CMOS rolling shutter, 1.3 megapixel (1280 x 1080) high dynamic range (HDR) high definition image sensor
Video resolution	1280 x 864 px sensor crop scaled to 1280 x 800, 1280 x 800 px sensor crop scaled to: 1280 x 800 or 1280 x 400 or 640 x 800 or 640 x 400 or 320 x 800.
Protocols	RTP over UDP (RFC6184), ISO17215-2014, AVB (IEEE1722), VLAN
IP address	DHCPv4 or static IPv4 address
Light sensitivity	Backside illumination technology enables industry-leading light sensitivity < 0.1 lux
Dynamic range	120 dB
Compression	H.264 (with I-frames only)
Camera latency	25 ms
Image processing	Color and gamma correction, 3D noise correction, edge enhancement, digital WDR, advanced contrast enhancement, auto white-balance, auto exposure control, cropping, mirroring, flipping and scaling

Electrical

Power input	8V - 32V DC
Power consumption	< 2W
Connector	Integrated TE Connectivity HDSCS automotive connector system for power and data interface. Mating connector is HDSCS 1-1418469-1
Cabling	1010417 (2 m / 6.5 ft) 1010418 (5 m / 16.4 ft) 1010419 (8 m / 26.2 ft)

Compliance

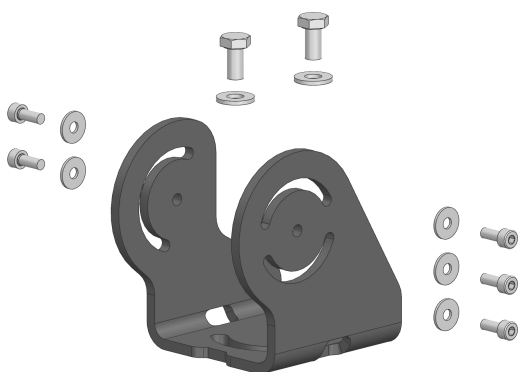
Approvals	In compliance with relevant EMC- and Automotive directives
Standards	FCC Class B, ISO13766

Mechanical

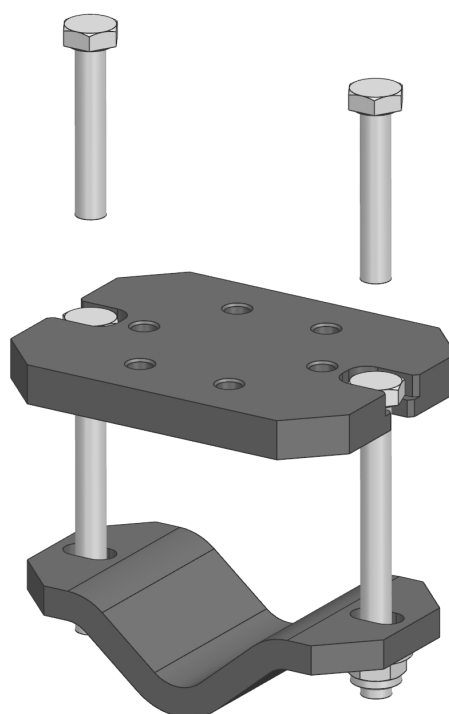
Housing	Front assembly: anodized aluminum. Back cover PC/ABS with integrated connector. All materials are UV resistant according to ISO 4892-2 and corrosion proof according to IEC 60068-2-52 salt mist, cyclic.
Impact protective housing	Powdercoated black aluminium
Ingress protection	IP67 according to EN 60529; dust tight and protected against the effects of immersion in water up to 1m under water for 30 minutes. IP69k according to DIN 40050-9: the camera can withstand high-pressure cleaning with water: 14-16L/min, at 80°C and 80-100 bars
Shock constancy	Shock and vibration resistance for usage on heavy equipment, trucks, cranes, forklifts, maritime applications, and machinery. Random vibration test 15,3Grms. Shocks 500 m/s ² impacts according to IEC 60068-2-27 (50G).
Weight	261 g
Shape and dimensions	Cube-shaped camera 57 x 57 x 86.5 mm 2.24 x 2.24 x 3.40 inches
Operating temperature	-40°C to +85°C -40°F to 185°F
Storage temperature	-55°C to +105°C -67°F to 221°F

Accessories

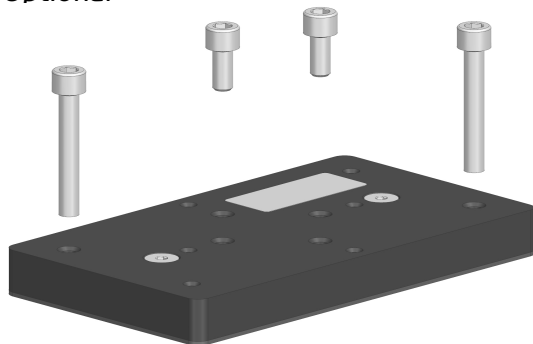
Leica CRS202 Universal Camera Bracket
Included for every camera



Adjustable rail mount 20 - 50 mm
Optional



Leica MMB1493 Magnetic Bracket
Optional



- when it has to be **right**

Leica
Geosystems

Illustrations, descriptions and technical data are not binding.
All rights reserved. Copyright Leica Geosystems AG, Heerbrugg, Switzerland 2025